

DRAWING NUMBER
50/171

DRAWING NUMBER

DRAWING NUMBER

DRAWING NUMBER

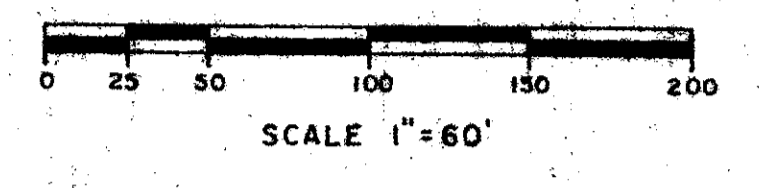
171

PART OF A P.U.D.
LA PAZ AT BOCA POINTE - PHASE II
 A PLAT OF A PORTION OF SECTION 28, TOWNSHIP 47 SOUTH, RANGE 42 EAST
 AND ALSO BEING A REPLAT OF A PORTION OF TRACT P, BOCA POINTE NO. 1, AS RECORDED
 IN PLAT BOOK 42, PAGES 141-143 OF THE PUBLIC RECORDS OF PALM BEACH COUNTY, FLORIDA

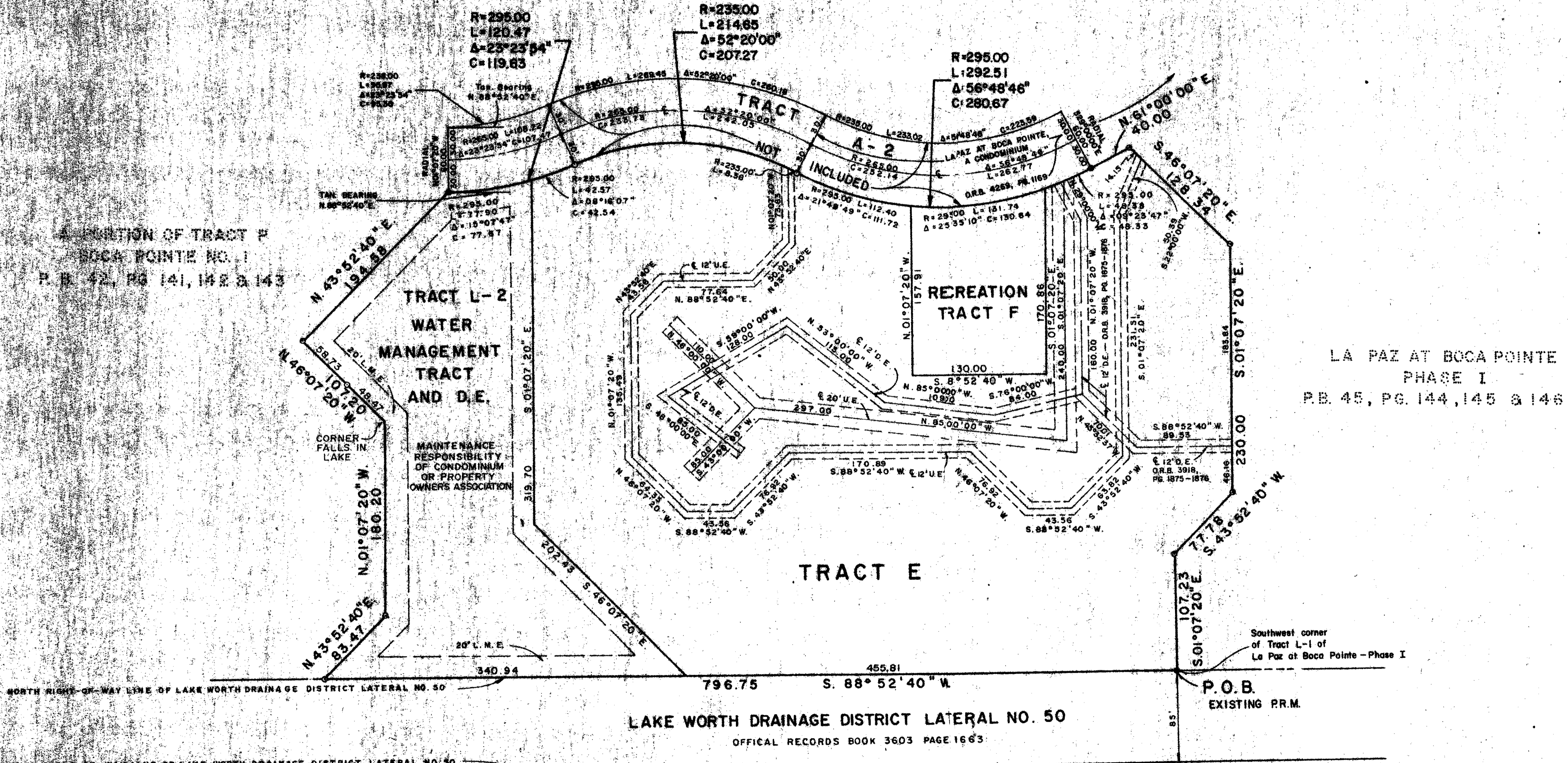
JOHN A. GRANT, JR., INC. CONSULTING ENGINEERS AND LAND SURVEYORS BOCA RATON, FLORIDA

MAY 1984

SHEET 3 OF 3



A PORTION OF TRACT P
 BOCA POINTE NO. 1
 P. B. 42, PG. 141, 142 & 143



LA PAZ AT BOCA POINTE
 PHASE I
 P. B. 45, PG. 144, 145 & 146

28/47/42
 SUBDIVISION *In Paz*
 BOOK 50 PAGE 171
 FLOOD ZONE AD-1 FLOOD MAP # 2400
 QUAD # 54 ZONING RS
 DE PUD ZIP CODE 33473
 PUD NAME Boca Pointe

NOTES:

Bearings shown herein are based on a bearing of S. 88° 52' 40" W. along the North right-of-way line of Lake Worth Drainage District Lateral No. 50, as shown on the record plat of Boca Pointe No. 1 as recorded in Plat Book 42, Pages 141-143 of the public records of Palm Beach County, Florida.

- ⊙ P.R.M. Indicates Permanent Reference Monument.
- P.C.P. Indicates Permanent Control Point.
- U.E. Indicates Utility Easement.
- D.E. Indicates Drainage Easement.
- L.A.E. Indicates Limited Access Easement.
- L.M.E. Indicates Lake Maintenance Easement.

No buildings or any kind of construction shall be placed on utility or drainage easements.

No structures, trees or shrubs shall be placed on drainage easements.

Approval of landscaping, utility easements, other than water and sewer, shall be only with the approval of all utilities occupying same.

NOTE: For list of ADDITIONAL ENCUMBRANCES, see Sheet 2 of 3.

LA PAZ AT BOCA POINTE

This instrument was prepared by:
 John A. Grant, Jr., John A. Grant, Jr., Inc.
 3333 North Federal Highway, Boca Raton, Florida 33431

0211-320